

# REAL-TIME MONITORING AND CONTROL



**FleetManager**

Global maritime fleet tracking and management

**ChartCo** 

VOYAGE COMPLIANCE MADE SIMPLE

# REDEFINING SHIP MONITORING

Introducing **FleetManager**, a powerful portal destined to set a new standard in global fleet-tracking.

Our remote monitoring solution offers full on-shore, advanced situational awareness and maritime intelligence, putting you fully in control of decision-making, helping to improve operational efficiency and supporting compliance.

Through a single web-based platform you're able to:

- Track your fleet anywhere, any time
- Identify deviations from approved passage plans
- Ensure MARPOL compliance
- Respond more quickly to any emergencies
- Take control of your fleet's compliance with remote outfit auditing

---

Global maritime fleet tracking  
and management

# MONITOR THE PROGRESS OF YOUR FLEET IN REAL-TIME



Fleet tracking uses both satellite and terrestrial AIS tracking, so you can locate any vessel in your fleet at any time. You can also view your fleet on electronic navigation charts which display charted features including depths, vessel traffic separation schemes, lights and racons.

Built with flexibility in mind, you can use our own tracking service or select the service plan which allows **FleetManager** to display third-party tracking.

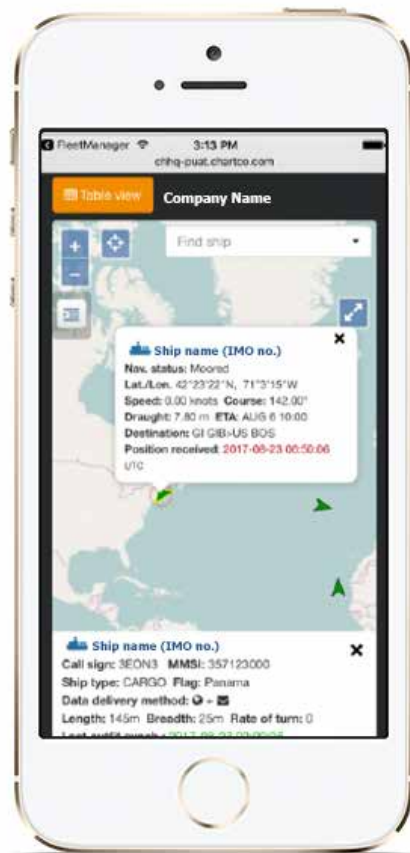
**FleetManager** also syncs up with **PassageManager**, giving visibility of intended track, so you can see instantly if one of your vessels is off track.

# ENVIRONMENTAL AND WEATHER OVERLAYS

Ensure your vessels are MARPOL compliant

**FleetManager** also syncs up with **EnviroManager** so you can see at a glance if any of your vessels are in waters that are subject to environmental regulations, such as MARPOL, ballast water conventions, regional or national regulations. Our database of environmental regulations is constantly updated, helping your fleet to remain compliant.

You can overlay weather forecasts, showing wind, surface pressure, air temperature, rainfall and significant wave heights, to help you understand what conditions your fleet is facing. Other overlays, like piracy areas, load lines, no-go areas and time zones give you the complete picture and help you to avoid hazards and manage potential delays.



**FleetManager's** suite of overlays keeps you fully in the picture of your fleet's local conditions:

- 

Emission control areas (ECAs)
- 

Ice pack
- 

Iceberg
- 

Load lines
- 

National marine sanctuaries
- 

No-go areas
- 

Piracy areas
- 

Particular sensitive sea areas
- 

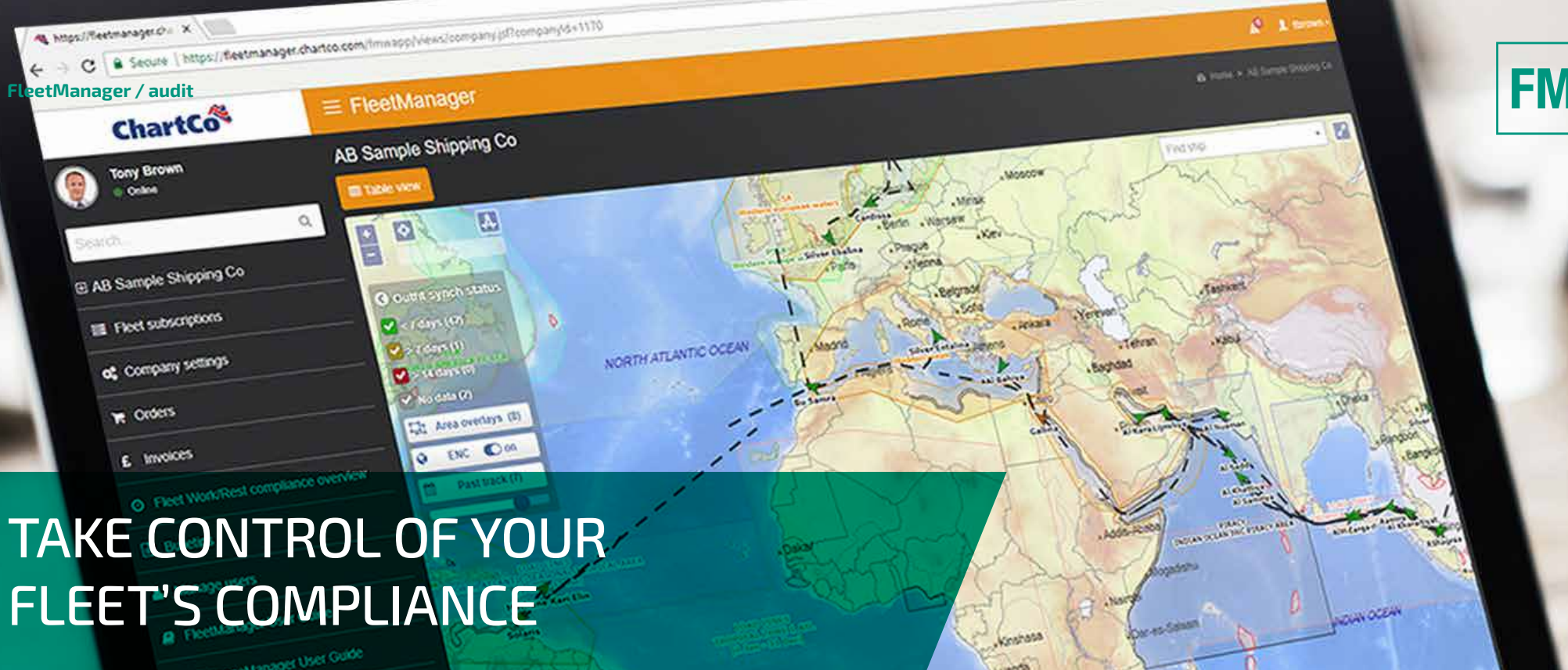
Special areas



# RESPOND MORE QUICKLY TO EMERGENCIES

**FleetManager** includes a range of ECDIS-type functionality to assist in shore-side evaluation and management of emergency situations. Electronic bearing line and variable range marker tools combined with the ENC chart background and weather overlay greatly improve situational awareness. **FleetManager** also allows you to increase the frequency of AIS position reporting for near real-time updates.





## TAKE CONTROL OF YOUR FLEET'S COMPLIANCE

**FleetManager** enables you to audit and manage the content of a vessel's outfit without contacting the vessel's crew. Combined with its reporting capabilities, this powerful tool gives you the ability to monitor a vessel's navigational data remotely.

You can download a vessel's chart outfits in PDF, CSV, XML or RTF format, check the subscription status, manage automated chart and publication orders and view invoices and internet/email data usage. You can also determine whether the vessel's crew is work-and-rest compliant.

Stay informed via our automated SMS or email alerts, confirming planned or unplanned changes in course or speed, the proximity of hazards like piracy areas, and updates on arrival or departure times.

# TECHNICAL INFORMATION

The standard version of **FleetManager** is available to all ChartCo **PassageManager** subscribers as part of their existing package, and for a small fee you can benefit from the tracking-enabled version.

FM



**FleetManager** gives your on-shore team secure, password-protected access to live ship data.



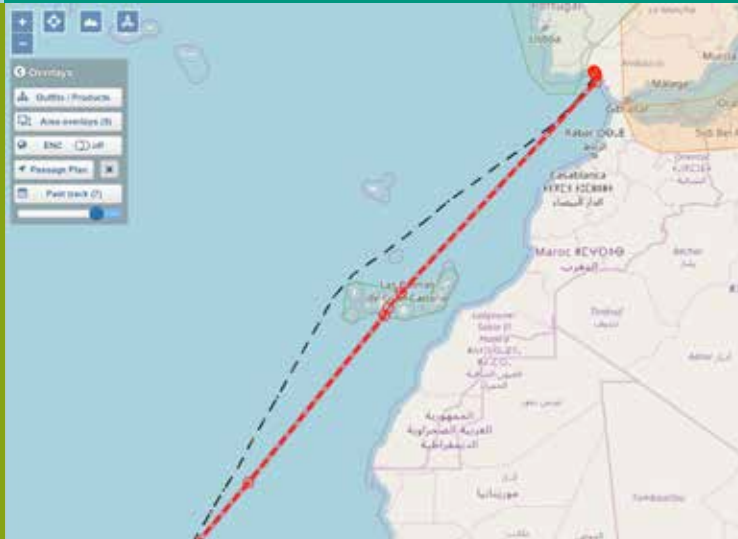
**FleetManager** updates itself automatically so you always have the latest information on your screen without further intervention.



You can use **FleetManager** on desktop, laptop, mobile and tablet devices. All you need is an internet connection.



You can set up a quicklink within **FleetManager** to allow single click access from your home screen.



Three user licences are provided for each account holder as standard. Extra licences can be added for a small fee.



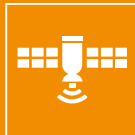
Already have a tracking solution? **FleetManager** is compatible with third-party platforms, simply choose our YouTrack plan to use your existing tracking plan provider.

# TECHNICAL INFORMATION

Data management and reporting



Vessel position is updated every six hours as standard, and the WeTrack plan allows more frequent tracking to be purchased and enabled, down to intervals of three minutes if needed.



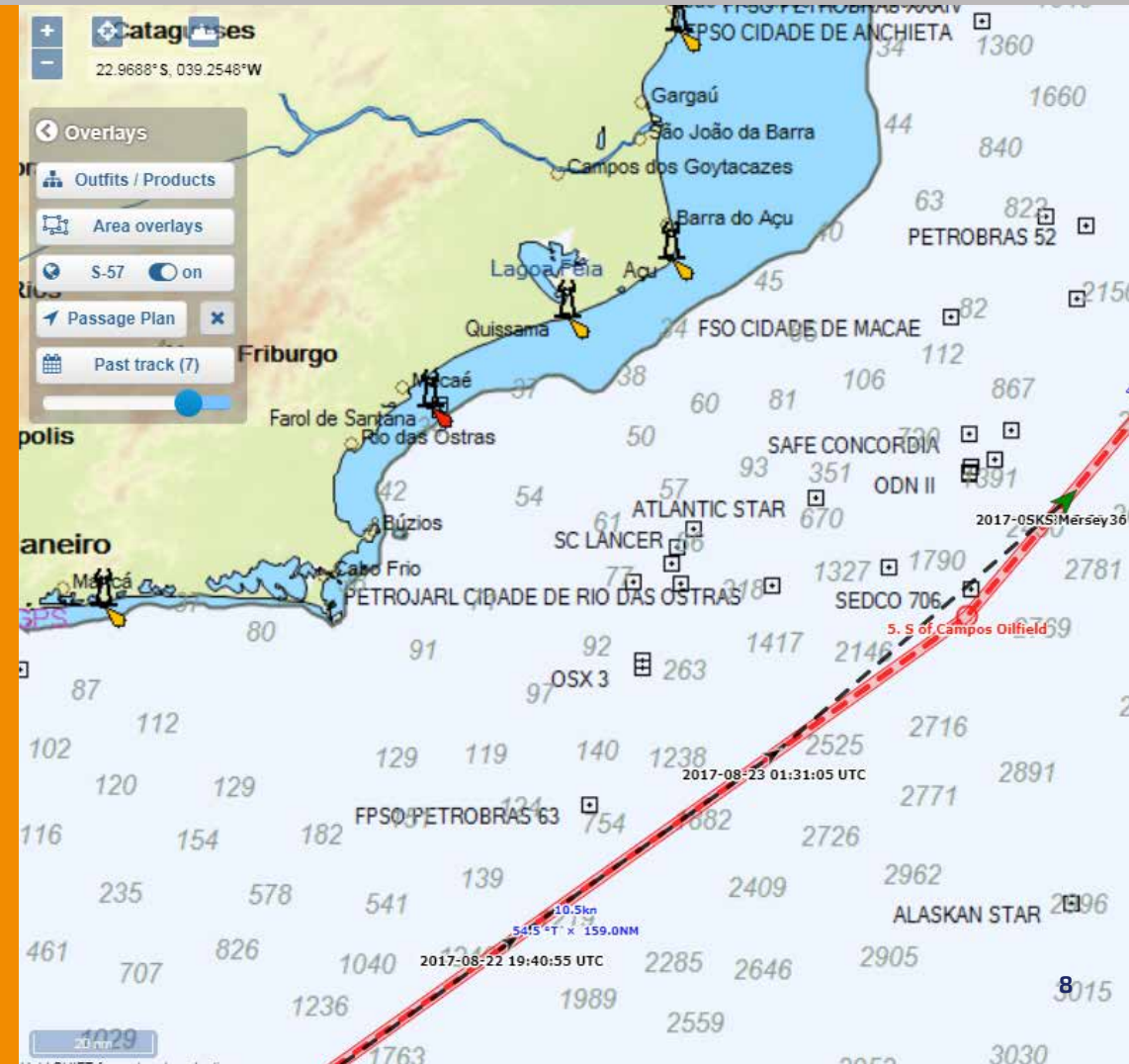
Tracking data is supplied by ORBCOMM's satellite AIS data service, the first commercial satellite network with AIS data services, tracking more than 150,000 vessels every day.



Worldwide ENC data is provided by C-MAP.



**PassageManager** passage plans can be viewed in **FleetManager**.





# PRODUCT PLANS: WHICH ONE IS RIGHT FOR YOU?

FM

## FleetManager / Basic

**COST PER VESSEL:** Price on application

**USER LICENCES:** Unlimited

**MAPPING:**

- ✓ Open sea charts
- ✓ B2B ordering
- ✓ Vessel database

**TRACKING:** N/A

**SUPPORT:**

- ✓ Email / Telephone
- ✓ User guide

Available to all our PassageManager subscribers:  
simply contact us to set up account access.

## FleetManager / YouTrack

**COST PER VESSEL:** Price on application

**USER LICENCES:** 3

**MAPPING:**

- ✓ Open sea charts
- ✓ Electronic navigational charts
- ✓ B2B ordering
- ✓ Vessel database

**TRACKING:**

- ✓ Satellite AIS
- ✓ Terrestrial AIS
- ✓ Future Track
- ✓ Past Track
- ✓ Zones
- ✓ Emergency Room Tools
- ✓ EnviroManager<sup>1</sup>
- ✓ Weather<sup>1</sup>
- ✓ Alerts<sup>1</sup>

**SUPPORT:**

- ✓ Email / Telephone
- ✓ User guide

Choose this option if you already have a tracking  
solution in place today.

## FleetManager / WeTrack

**COST PER VESSEL:** Price on application

**USER LICENCES:** 3

**MAPPING:**

- ✓ Open sea charts
- ✓ Electronic navigational charts
- ✓ B2B ordering
- ✓ Vessel database

**TRACKING:**

- ✓ Satellite AIS (every 6hrs)
- ✓ Terrestrial AIS (every 6hrs)
- ✓ Future Track
- ✓ Past Track
- ✓ On Demand Tracking<sup>2</sup>
- ✓ Zones
- ✓ Emergency Room Tools
- ✓ EnviroManager<sup>1</sup>
- ✓ Weather<sup>1</sup>
- ✓ Alerts<sup>1</sup>

**SUPPORT:**

- ✓ Email / Telephone
- ✓ User guide

**FREE TRIAL AVAILABLE FOR ONE MONTH  
WITH UNLIMITED USER LICENCES**

The perfect plan if you are looking to switch  
tracking provider or you do not currently have one.

# OUR CORE SUITE OF DIGITAL SOLUTIONS

FM

PM

For navigation

**PassageManager**

Our flagship software platform allows safe and compliant voyage planning via an intuitive graphical interface. Creates comprehensive passage plans in minutes and manages data and your digital library with ease.

EM

For environmental compliance

**EnviroManager**

Our location-based environmental solution helps you stay compliant with MARPOL and national regulations. A user-friendly interface and traffic light system help minimise the risk of faulty discharge.

DM

For safety & quality compliance

**Docmap**

Our world-leading safety management system to meet obligations under the ISM Code for ship safety management and operation. Manages all documents, core forms, inspections, risk assessments and maritime compliance.

R4S

For regulations management

**Regs4ships**

Our digital maritime regulations solution combines flag state compliance documentation with IMO, ILO and EU legislation in a user friendly searchable database. Reduces paper publications on-board and administration time.

**FleetManager** enhances your fleet control capability, with real-time tracking and full operational intelligence.

Contact us today to see **FleetManager** in action, to find out more, or to discuss your specific fleet management requirements.

+44 (0)1992 805400  
[enquiries@chartco.com](mailto:enquiries@chartco.com)  
chartco.com



**FleetManager**

Global maritime fleet tracking and management

**ChartCo**

VOYAGE COMPLIANCE MADE SIMPLE