



EMPOWERING CREWS TO COMPLY WITH ENVIRONMENTAL REGULATIONS



EnviroManager
For environmental compliance

ChartCo 
VOYAGE COMPLIANCE MADE SIMPLE

YOUR CREWS NEED YOUR HELP TO STAY COMPLIANT WITH ENVIRONMENTAL REGULATIONS

New environmental regulations are being introduced all the time, and existing regulations, whether international, national or regional, are becoming ever stricter. Fines for breaches are getting heavier, plus there's the reputational damage to consider, not just the environmental harm. That's why compliance with environmental regulations is more important than ever and your vessels' crews need help to stay compliant.

These are the four most common concerns voiced by HSEQ staff about compliance with environmental regulations..

DISTANCE OFFSHORE

Simply measuring a vessel's distance from the coast can lead to illegal discharges, because the limits of a State's territorial waters are defined by a 'baseline', based on an archipelagic model. Without knowledge of the baseline, your crew cannot know how far offshore the vessel is officially and whether discharges are compliant. The case study on page four outlines one such incident where this simple confusion resulted in an illegal discharge.

PLANNING DUTIES

Without absolute clarity on what can be discharged and where, your crews won't be able to plan ballast water exchanges, which require a minimum depth and distance offshore for compliance, and discharges for bilge water, sewage and food waste. One company was recently fined \$7,500 by the California Air Resources Board for violating air quality regulations after one of its vessels failed to switch from high to low sulphur fuels before it entered territorial waters.

FINANCIAL SANCTIONS

Environmental authorities are exercising unprecedented vigilance and illegal discharges are being taken extremely seriously – one company was recently fined \$5,000 by the Australian Maritime Safety Authority for illegally discharging one bucket of food waste.

REPUTATIONAL DAMAGE

Our environmental awareness has never been so high, which means that all breaches of environmental regulations receive publicity, and serious breaches are known worldwide. Many shipping companies invest heavily in positioning their brands as environmentally aware, so the reputational damage caused by any breach of environmental regulations could be considerable. Why risk it?



GIVE CREWS A USER-FRIENDLY TOOL FOR ENVIRONMENTAL COMPLIANCE

With access to all agreed national and international baselines, along with all the latest international, national and regional environmental regulations, **EnviroManager** gives bridge teams absolute clarity on whether compliant discharges can be made. **EnviroManager** also calculates your Zone Entry Time to territorial waters, SAs, PSSAs and ECAs, displaying distance and time to entry. This enables your crews to schedule efficient and compliant waste handling duties.

EnviroManager addresses every concern raised by HSEQ staff.

<h3>INSTANT CLARITY</h3>	<p>EnviroManager's database includes all country-specific baseline coordinates. It displays your vessel's position, and contoured shading shows your bridge team at a glance whether your vessel is more or less than 3, 12, 25 or 50 miles offshore.</p>
<h3>BETTER PLANNING</h3>	<p>With all environmental regulations built-in, EnviroManager's database uses colour coding to show your crews instantly which discharges can and can't be made, whether at the vessel's current position or anywhere along its planned route.</p>
<h3>PROTECT THE ENVIRONMENT</h3>	<p>For a comparatively small investment, you can have EnviroManager on all your vessels and give your bridge teams the knowledge to remain 100 per cent compliant with all internationally agreed environmental regulations. Help the planet, eliminate fines, and look after your crews.</p>
<h3>SHOW THAT YOUR COMPANY CARES</h3>	<p>Your company's ISO 14001 certification is becoming ever more important to investors and partners. With increasing focus and regulation on reducing shipping's environmental impact, EnviroManager protects your company's profile.</p>

A CASE IN POINT

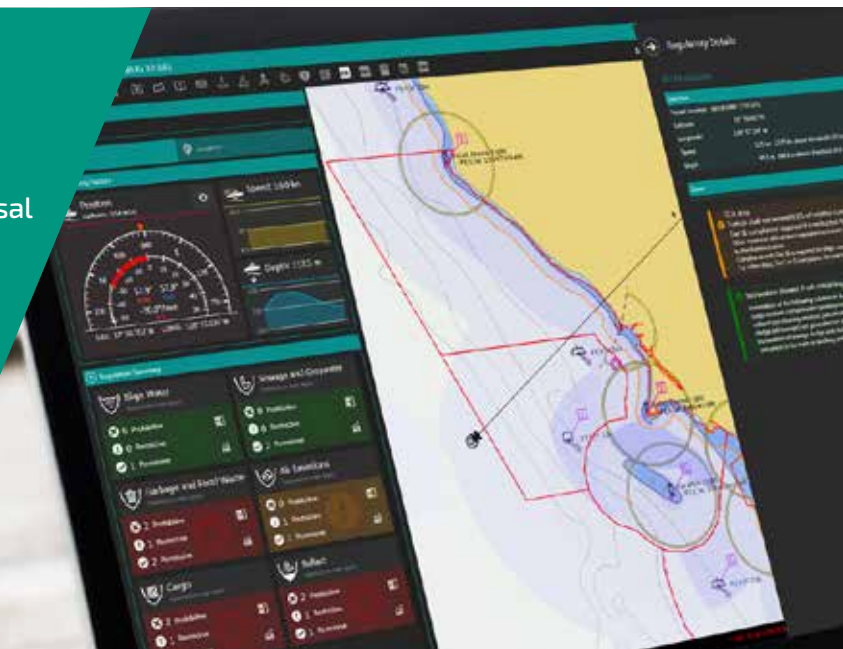
THE SITUATION

The Captain of the Kruger III contacted its owner with the following message:

“Please note Krüger III is now in Ningbo. During the normal onboard checks by the Ningbo Maritime Safety Administration, the officers found, in the garbage disposal book, that a recent garbage disposal place is less than 3nm from the local coastline, which is in violation of local environment law.”

With the message he sent a photo of the chart showing the exact position of the alleged breach, which was more than 12nm from the coast. The owner replied with the following:

- “According to the chart you sent to us the ship was more than 12nm from the nearest land, as required by MARPOL annex V regulation 3.
- “The fine issued from the port authority states “garbage disposal place is less than 3nm from the local coastline”. There is no coast/nearest land within 3nm of the disposal position.
- “Please appoint the P&I inspector to clarify this with the local authorities in order to cancel the fine and ensure the vessel is sailing on time.”



A CASE IN POINT

THE CONFUSION

The International Convention for the Prevention of Pollution from Ships (MARPOL) contains many discharge standards that require a vessel to be a certain distance from the nearest land before a legal discharge at sea can be undertaken.

Kruger III was more than 12nm from the coast when the discharge was made, so why was it illegal?

The answer lies in MARPOL's definition: "The term "from the nearest land" means from the baseline from which the territorial sea of the territory in question is established in accordance with international law (UNCLOS)."

THE ANSWER

EnviroManager contains all baselines across the entire world. If the Kruger III had EnviroManager onboard, with one glance it would have been immediately obvious to the bridge crew that the discharge would breach environmental regulations.

This is why it's used by some of the world's biggest shipping companies to stay compliant, avoid fines, make bigger profits and protect their reputations.

HSEQ managers welcome EnviroManager's compliance credentials

"A recent audit by Shell onboard one of our vessels made a positive acknowledgement that we have invested well in software packages such as ChartCo's **Docmap** for controlling our SMS and communication between shoreside HSE management and the vessel, and their **EnviroManager** tool which the auditor noted as '... an innovative system that uses the vessel's GPS position to indicate what controls the vessel should have in force for the control of waste according to MARPOL.' We are very happy with the outcome."

Lars B. Løddøen, HSEQ Manager, Sanco Shipping AS

CHARTCO: DIGITAL SPECIALIST FOR MARINERS

Our market-leading solutions provide a complete suite of digital tools that takes away tedious, cost-consuming paperwork, increases efficiency and tightens up compliance.

EM

PM

For navigation

PassageManager

Our flagship software platform allows safe and compliant voyage planning via an intuitive graphical interface. Creates comprehensive passage plans in minutes and manages data and your digital library with ease.

FM

For remote monitoring & control

FleetManager

Our remote monitoring solution offers full on-shore, advanced situational awareness and maritime intelligence, putting you fully in control of decision-making, helping to improve operational efficiency and supporting compliance.

DM

For safety & quality compliance

Docmap

Our world-leading safety management system to meet obligations under the ISM Code for ship safety management and operation. Manages all documents, core forms, inspections, risk assessments and maritime compliance.

R4S

For regulations management

Regs4ships

Our digital maritime regulations solution combines flag state compliance documentation with IMO, ILO and EU legislation in a user friendly searchable database. Reduces paper publications on-board and administration time.



Simplifying environmental compliance for crews

Contact us today to see **EnviroManager** in action, to find out more, or to discuss your specific fleet's requirements.

+44 (0)1992 805400
enquiries@chartco.com
chartco.com



EnviroManager
For environmental compliance

ChartCo 
VOYAGE COMPLIANCE MADE SIMPLE