

MetManager™

Marine weather information service

MM

Using the same ChartCo system and software already fitted on many commercial vessels for the receipt of critical chart correction information, the ChartCo MetManager™ service provides comprehensive weather information and computer-based onboard vessel routing advice.

Benefits

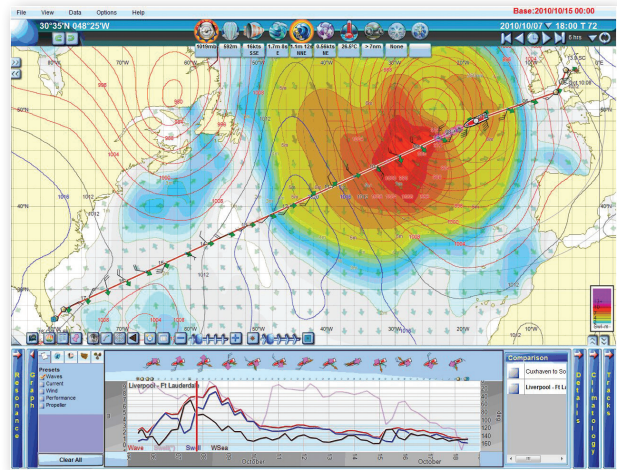
Up to date weather forecasting and routing capability means that weather damage to the vessel and cargo can be avoided.

ChartCo can also arrange for shore-based routing services based on the same core data, allowing bespoke voyage instructions to be sent to the vessel, which can be imported into the on board software to give convenient visual representation of the proposed route.

The MetManager™ service is available via ChartCo Select and Broadcast. Service contracts are on the basis of a fixed weekly fee and can be for as short as three months.

Forecast data automatically received on board the vessel without the need for initiation by vessels' crews. All vessels receive highly detailed full ocean region coverage.

Vessel Routing: following receipt of new forecast data, the user can update the computer-based routing advice with enhanced route comparison and track details in order to ensure economic passage planning.



Guaranteed Route Optimisation and up to the minute weather forecasting. Avoid cargo damage and significantly save on your fuel costs.

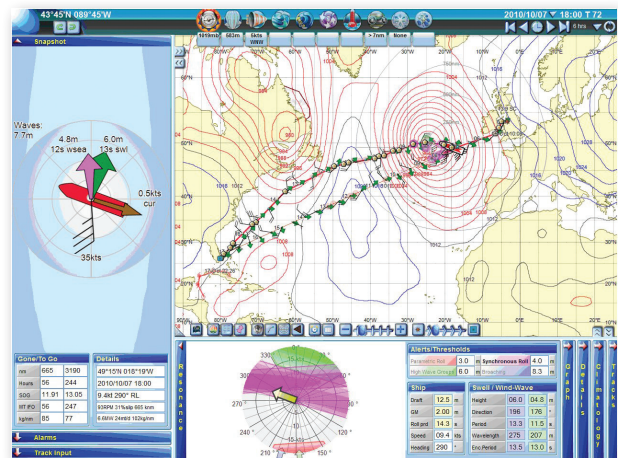
ChartCo
Approved. On Time. Up To Date.

New North Road, Hainault, Ilford
Essex IG6 2UR

Tel. +44 20 8267 0003 Fax. +44 20 8267 0004
Email: sales@chartco.com Web: www.chartco.com

Key Features

- Weather forecast data updated every six hours.
- As recommended by SOLAS, forecast data is displayed in graphical format and includes:
 - Surface pressure.
 - 500 mb pressure.
 - Wind direction and speed ranges.
 - Significant wave height and swell height.
 - Latest tropical storm information (text and graphical presentation).
 - Significant ocean current information.
 - Ice information (text and graphical).
 - Sea surface temperature analysis.
- Two levels of service are available; 5 Day and 16 Day.
- On-board route planning includes:
 - User defined routes, wind and sea limits and no-go areas.
 - Computer recommended routes.
 - Route comparison.
 - Record of weather data for route.
 - Storm and ice bulletins every six hours.
 - Simulation.
 - Optimisation (Best ETA).
 - Optimisation for fuel (Fixed ETA).
 - Port forecast and precipitation data.
 - Data reporting system.
- Available through quarterly or annual subscription.



New North Road, Hainault, Ilford
Essex IG6 2UR

Tel. +44 20 8267 0003 Fax. +44 20 8267 0004
Email: sales@chartco.com Web: www.chartco.com